



**30 Willcox Crescent Kellyville NSW**

5 🛏 3 🚿 2 🚗

Elegantly appointed and perfectly positioned amongst high calibre homes, this stunning residence with two master bedrooms, each on a separate level, is ideal for multi-generational family. Be impressed upon entry by the palatial foyer with the designer chandelier, complemented by the solid timber stairway.

The residence includes versatile living areas with high ceilings and an expansive upstairs rumpus room. The gourmet kitchen is fitted with stainless-steel appliances, breakfast bar, walk-in pantry, waterfall Caesarstone bench-tops, and ample storage. All bedrooms are generous in size, all with built-ins and master bedrooms with walk-in wardrobe and ensuite.

The outdoor area is an entertainer's dream, meticulously designed to combine elegance and functionality. It features

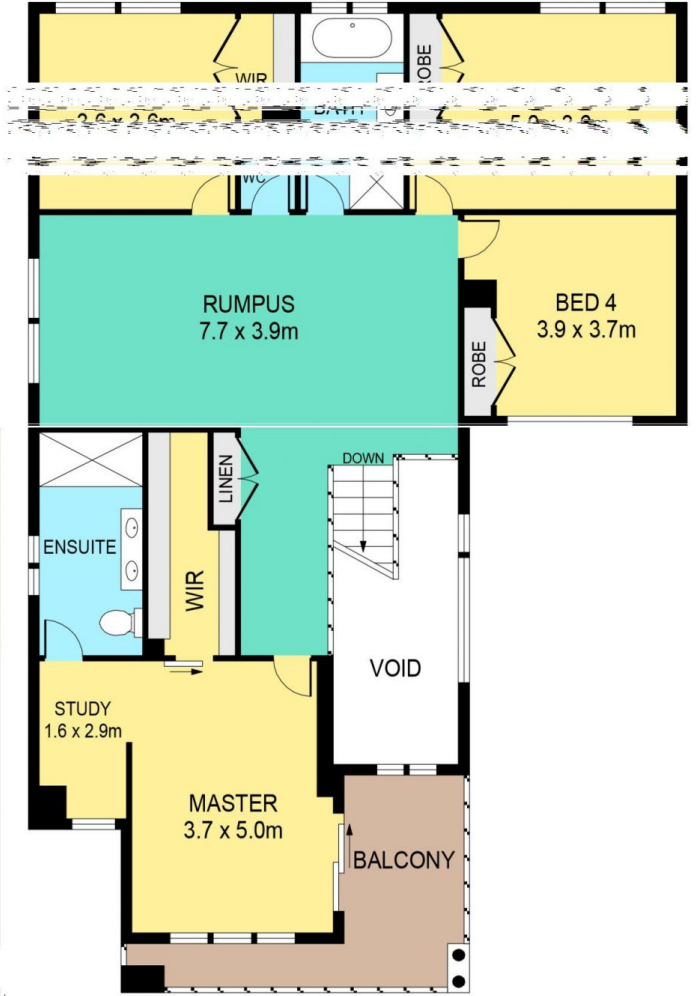
**Price** : \$3,000,000 - \$3,200,000  
**Land Size** : 700 sqm  
**View** : <https://www.theavenurealestate.com.au/8052116>



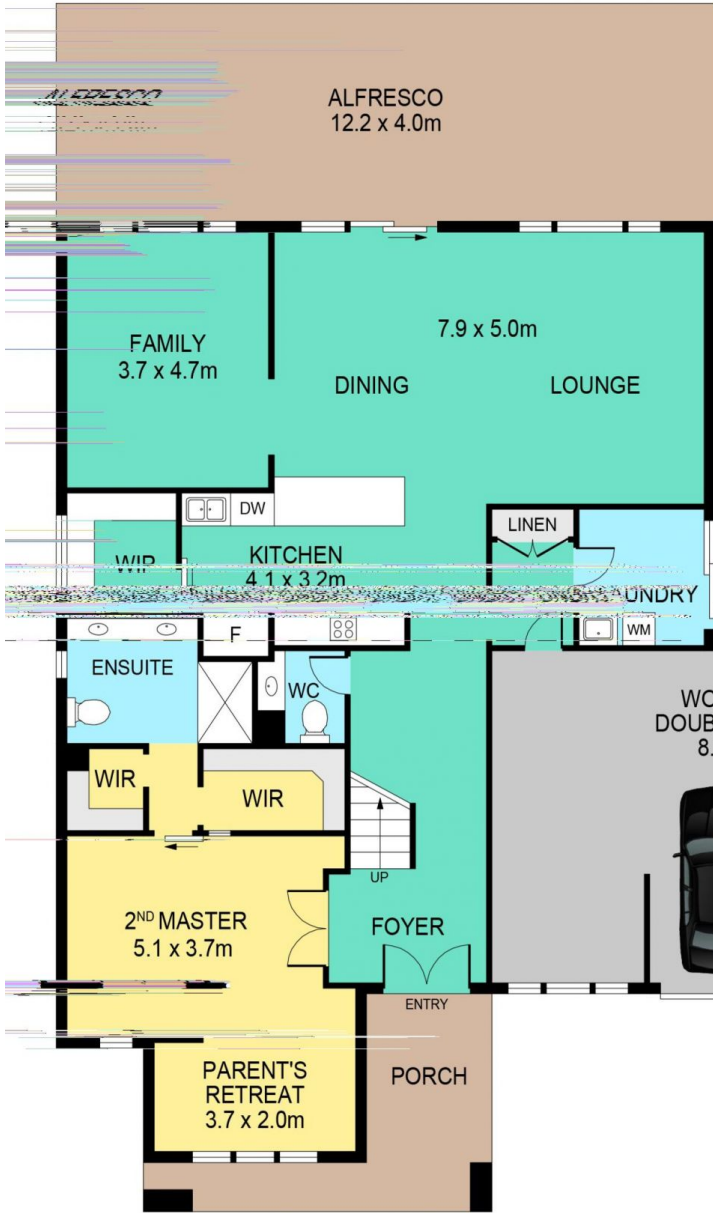
**Soha Soheili**  
02 9634 3444



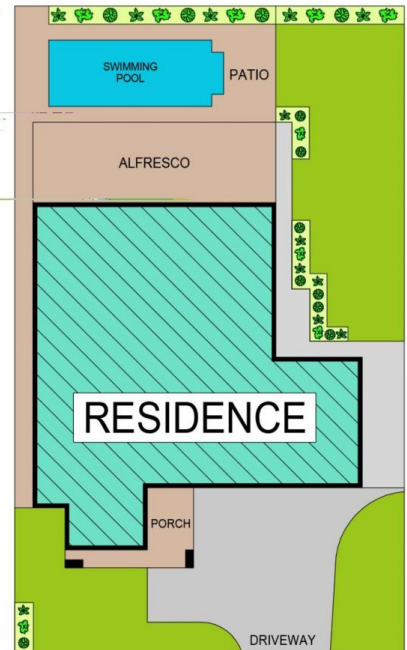
**Sherry Soheili**  
02 9634 3444



FIRST FLOOR



GROUND FLOOR



SITE PLAN

# 30 WILCOX CRESCENT, KELLYVILLE

**DISCLAIMER:**

PLANS SHOWN ARE FOR MARKETING PURPOSES ONLY. ALL DIMENSIONS ARE APPROXIMATE AND NOT TO SCALE. THE ARCHITECT ACCEPTS NO LIABILITY FOR ANY INACCURACIES AND NO LIABILITY WILL BE ACCEPTED. INTERESTED PARTIES SHOULD MAKE THEIR OWN INQUIRIES.