



26 Valenti Crescent Kellyville NSW

5 🏠 4 🚗 5 🚗

Every once in a long while, a unique wonder presents itself to the market. A colossal luxury that holds its own with respect to design, size, quality and inclusions.

This 55 square, approximately 500m² of built-up area, majestic masterpiece is approximately 19 years since new and perfect for the large family or comfortably accommodating for two families. Brick from top to bottom, cement rendered, coated and painted to impress.

Set on a level block of 643m², set above street level, commanding views and its own cul-de-sac, the position could not have been better matched for this exquisite residence.

Superbly located with all conveniences in reach, yet a quiet haven that is in the catchment for two of the most

Price : \$ 2,110,000
Land Size : 643 sqm
View : <https://www.theavenurealestate.com.au/7452715>



Sacha Bayat
02 9634 3444



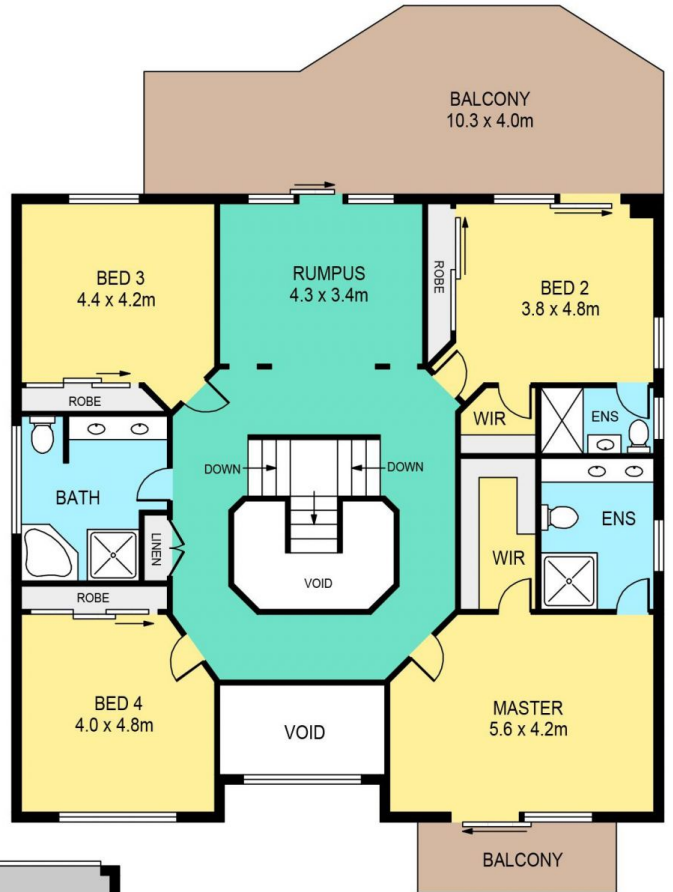
Soha Soheili
02 9634 3444



SITE PLAN



GROUND FLOOR



FIRST FLOOR

26 VALENTI CRESCENT, KELLYVILLE

DISCLAIMER:

PLANS SHOWN ARE FOR MARKETING PURPOSES ONLY, ALL DIMENSIONS ARE APPROXIMATE AND NOT TO SCALE. THEY ARE SUBJECT TO ERRORS AND INACCURACIES AND NO LIABILITY WILL BE ACCEPTED. INTERESTED PARTIES SHOULD MAKE THEIR OWN INQUIRIES.

INTERNAL	341sqm
EXTERNAL	56sqm
GARAGE	52sqm