



145 & 145A Lovegrove Drive Quakers Hill NSW

5 🛏 2 🚿 4 🚗

Situated on a level and easement-free block of 598m² with a massive street frontage of over 40m. This spacious brick house and 8 years young granny flat are within the catchment for the highly sought-after Quakers Hill Public School. Uniquely presented with both the house and granny flat enjoying street frontages and separate access. A mere 12-minute walk to Quakers Hill train station and shops, cycle track entrance across the road, Wyndham College and Nirimba Campus are approximately a 20-minute walk. Currently both residences are tenanted, with a rental potential of approximately \$900/week and showcasing the following:

Price : \$ 1,043,000
View : <https://www.theavenurealestate.com.au/7411810>



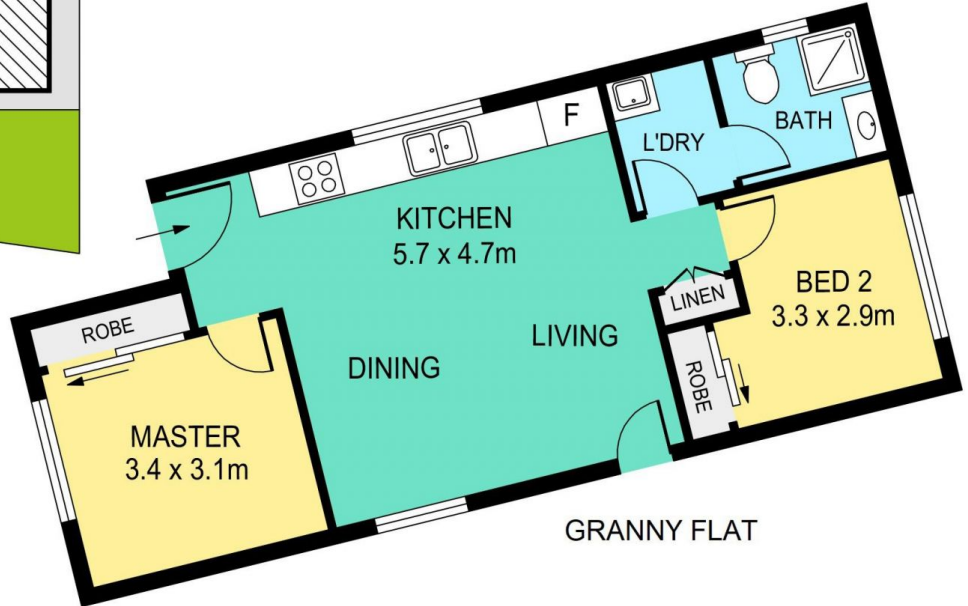
Sacha Bayat
02 9634 3444

Main residence:

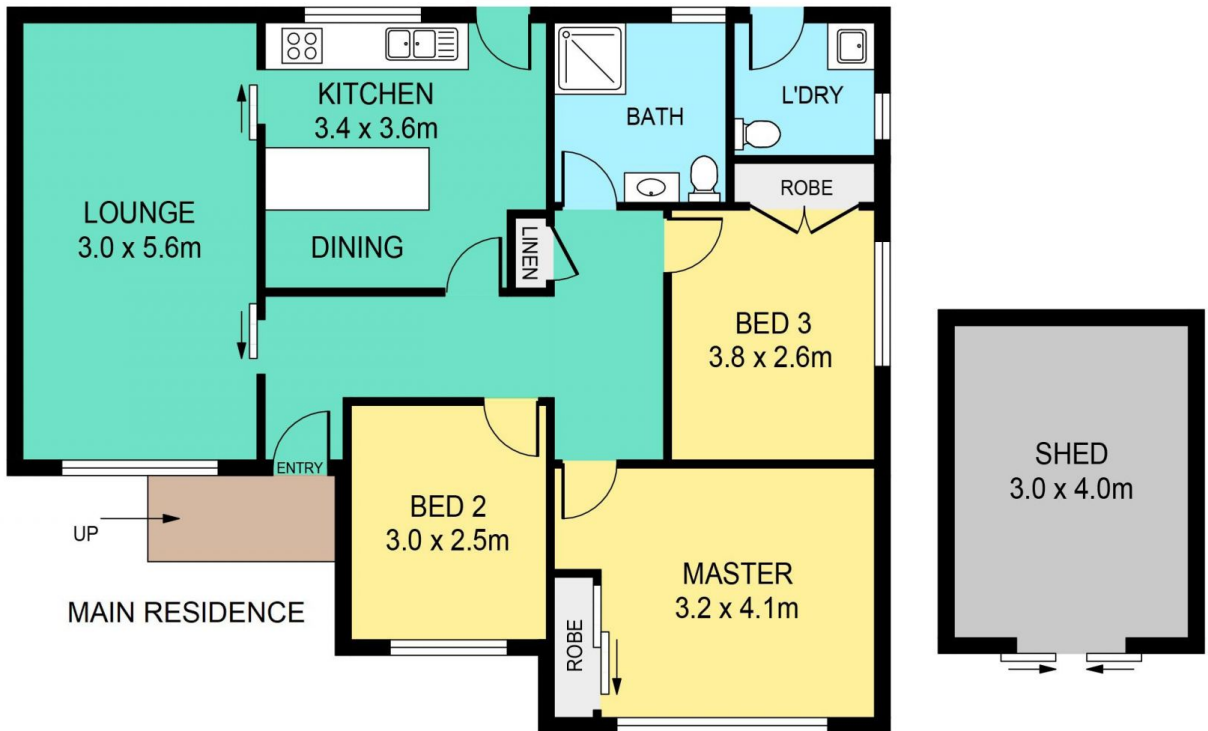
- Three generous bedrooms with stylish floating timber flooring.



SITE PLAN



GRANNY FLAT



MAIN RESIDENCE

145 & 145A LOVEGROVE DRIVE, QUAKERS HILL

DISCLAIMER:

PLANS SHOWN ARE FOR MARKETING PURPOSES ONLY. ALL DIMENSIONS ARE APPROXIMATE AND NOT TO SCALE. THEY ARE SUBJECT TO ERRORS AND INACCURACIES AND NO LIABILITY WILL BE ACCEPTED. INTERESTED PARTIES SHOULD MAKE THEIR OWN INQUIRIES.